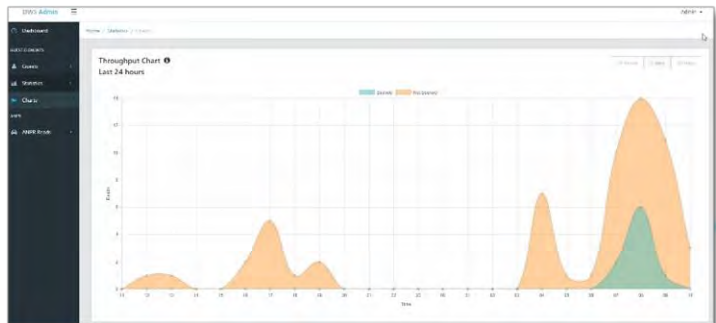
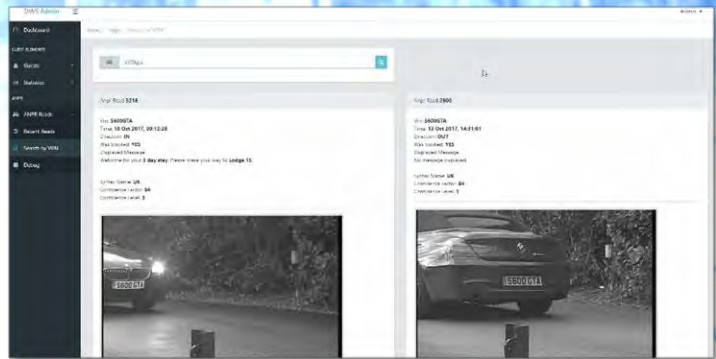


QRO ANPR DYNAMIC WELCOME SIGN

Utilise ANPR technology for personalised messages to improve customer relations and make your premises parking more efficient.

Outdoor monitor and ANPR system

- 24 hour ANPR capability with built in IR camera
- 1920 x 1080 weatherproof high brightness monitor
- Air conditioning for cooling
- Encompasses a built in Intel® processor for ANPR
- 4G/3G/GPRS Modem, WLAN and LAN for cloud data logging



Cloud based Dynamic Welcome Sign server software

- Input vehicles to match against personalised messages
- Set expiry times or maximum counts for matching
- Statistical graphs for throughput, site count and frequency of use
- Send notifications automatically via email when a vehicle of interest arrives

Specifications

PC processor

Intel® Core™ 1037U

Memory

4GB DDR3

Hard drive

500 GB

Ports

USB3.0, HDMI, VGA, LAN

Operating System

Windows 7 and above

Environmental Monitor

Panel

Industrial 16:9 47"

Resolution

1920 x 1080p

Brightness

2000 cd/m2

Contrast ratio

5000:1

Viewing angle

H/178, V/178

Response time

<8ms

Colour

16.7 million

Pixel pitch

0.63

Power supply

100 – 240V, 50/60Hz

Cooling

Air Conditioned Unit

Sunlight

Anti-glare sunlight readable

Protection

IP65

Material

Painted steel plate

Dimensions

195(H) x 79.5(W) x 21.5(D)cm

ANPR Camera

IR LED source

850nm

Optics

12 x optical zoom, f=3.94 – 46.05mm

Resolution

752(H) x 582(V)

Sensitivity

0.0 lux with illumination

Camera control

RS232 through QRO Solutions Software

Shutter speeds

1/120,000th to 1/50th second and sequential
shutter options

Operating voltage

10 – 15V DC protected

Power consumption

Nominally 10W

Warranty

1 year

For more information, contact us on:

+44 (0)1604 781890

www.qrosolutions.co.uk

sales@qrosolutions.co.uk